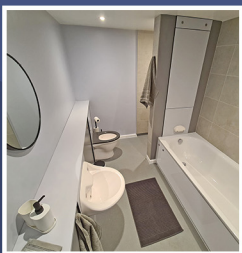
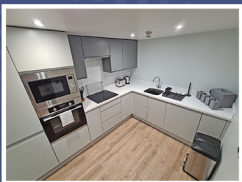
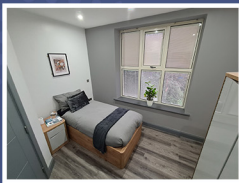
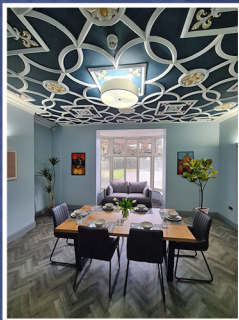


Regulated by



LEARNING DISABILITIES

Transitional Care and Support @ Kingfield Mews



- Children aged 16-17
- Young Adults aged 18-25

At **Kingfield Mews** our Care and Support packages are tailored to meet each individual's needs, which is achieved through the use of:

- Collaborative Person Centred Approach
- Family and Community Focused involvement
- Positive Support Planning

WE CONSIDER:

Children and Young Adults, male or female with:

- Severe, Moderate Learning Disabilities including Autism & ADHD
- Challenging Behaviour
- Social and Emotional Difficulties
- Self-harming

ACCOMMODATION:

- 6 Independent 1 Bedroom Care Suites each of which include their own Lounge, Dining Area, and Bathroom
- Group Living Home with 4 individual Bedrooms with En-Suite facilities

THE HOMES PROVIDES:

- Sensory Room
- Mood lighting in all living areas
- Education Rooms
- Meeting/Consultation Room
- Electronic Door Entry System
- Outdoor Safe and Secure Garden Area with CCTV
- Secure Wi-Fi Access

RISK MANAGEMENT

To manage risk, the Homes are equipped with:

- Kitchens which are securable as and when necessary
- Robust Furniture
- Underfloor Heating
- Double Glazed Windows Fitted with Integrated Blinds
- Anti Ligature Sanitaryware

LOCATION:

SHEFFIELD



PROGRESSIVECARE

ENQUIRIES:

0114 2800 230

07790 883956

REFERRALS@PROGRESSIVECARE.CO.UK

WWW.PROGRESSIVECARE.CO.UK